

CROSSWINDS

SPRING LAKE VILLAGE NEWSLETTER WINTER 2022



WINTER TRASH CAN PLACEMENT

Where should it go?

Heavy snow, icy roads, or poor visibility can make it difficult for snowplows to avoid garbage cans placed alongside the road. While shoveling your driveway, make sure to dig out a spot for your garbage can. Do not place garbage cans in the street regardless of the amount of snowfall. We realize the plowed area is an enticing location to place garbage cans, but it creates a hazard because they could get hit by vehicles or taken away by snowplows. Most garbage trucks have an extending arm which grabs the garbage cans. Place garbage cans within 3 feet from the curbside to ensure collection, however, ensure they are out of the way of the snowplow or snow being pushed aside on the road.

WINTER PARKING RESTRICTIONS

Know the rules.

Winter is coming! To facilitate the removal of snow from Village streets and roads, do not park or stop a vehicle as defined in the Uniform Traffic Code and the Michigan Motor Vehicle Code within five feet of the edge of the traveled portion of any Village Street or road or in any municipal parking lot between the hours of 2:00 a.m. and 6:00 a.m. from December 1st to April 1st. Snow or no snow, tickets will be issued.

PROTECT YOUR WATERSHED

Shovel your storm drains!

Always shovel storm drains from the sidewalk. Shovel snow on to vegetated areas, where melted water can soak into the ground. This reduces runoff that goes down storm drains and directly into rivers and streams.

VILLAGE HALL CLOSURE

Holiday observance dates.

Memorial Day - Monday, May 30, 2022

4th of July - Monday, July 4, 2022

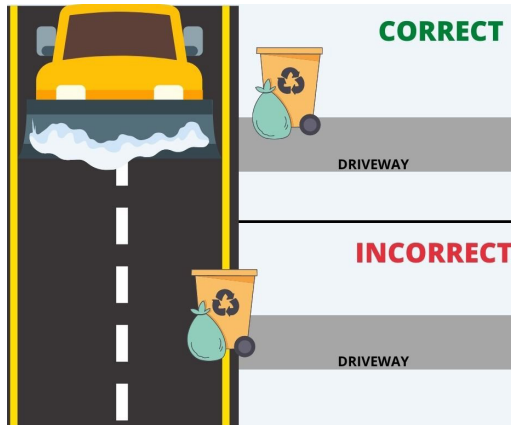
Labor Day - Monday, September 5, 2022

Veterans Day - Friday, November 11

Thanksgiving - Thursday, November 24th & 25th

Christmas - Friday, December 23rd & Monday, December 26th, 2022

New Year's - Friday, December 30th - Monday, January 2, 2023



SNOW PLOW IN THE VILLAGE RIGHT OF WAY

Follow the ordinance.

The Village will need your assistance this winter to provide a more drivable and walkable community in the winter months, especially following snow storms.

Please notify your plow driver that plowing snow across or onto public right-of-ways is prohibited by state law and our local ordinance.

Violation of the law/ordinance may result in a ticket being issued. The ticket would be issued to the property owner in violation as the Village is not aware of who has been hired to remove snow from various properties. If you have any questions or concerns regarding this, please call Village Hall at 616-842-1393.



VILLAGE HALL

102 W. Savidge
Spring Lake, MI 49456
P: 616-842-1393
F: 616-847-1393

VILLAGE MANAGER

Christine Burns

VILLAGE PRESIDENT

Mark Powers

COUNCIL MEMBERS

Joel TePastte,
Village President
Pro-tem

Michael Duer
Michelle Hanks

Mark Miller
Susan Petrus

Scott VanStrate

www.springlakevillage.org



Find us on Facebook!
Spring Lake Village-Government
or
Visit Spring Lake MI